



INGENII™
Ingenuity Applied

LINESET SAVER SERIES™
GEN2™ FLASH5™ FLASH8™

GEN2™ BOX

Introducing **GEN2™ Box** our second generation **INGENII** box, designed to protect your indoor mini-split components after rough-in. The **GEN2™ Box** includes numerous enhancements over our first-generation product, which has been installed thousands of times in homes and businesses in the Pacific Northwest.

Key Issues

- Ductless mini-split system installations are on the rise in new construction projects
- In many projects, components of the mini-split systems are installed by different trades at different times
- In approximately 5% to 10% of new construction installations, the copper line sets, drain, or electrical wiring systems are damaged during various stages of the project by other trades
- No standardized place to terminate line sets, drain line, and wiring
- There is no enclosure available today that has the capacity to safely house the ancillary items needed for some mini-split installations, including in-line pumps and connectivity devices such as adapters, Wi-Fi transmitters, etc.

GEN2™ Box Solution

- **SIMPLE**
 - Our **GEN2™ Box** is designed to fit within standard 16" stud wall framing
 - The **GEN2™ Box** can be mounted on both interior and exterior walls
 - Installation is very simple - 4 screws secure the box to the framing, 4 screws secure the cover to the box
- **SECURE**
 - After cover is installed, your rough-in components are protected inside the box
 - Made with strong ABS plastic and a robust design, the **GEN2™ Box** is able to safely and securely, protect your mini-split components against trade damage and adverse construction conditions
- **SIZED RIGHT**
 - Flexible design allows the **GEN2™ Box** to work with various mini-split brands, sizes, and piping configurations
 - Multiple ancillary devices can easily be placed inside the **GEN2™ Box**

GEN2™ Box Benefits

- The **GEN2™ Box** is simple and easy to install- reduce labor and standardize installations
- Eliminate rework costs due to damaged piping and wiring
- Aesthetic improvements- a single, safe place for all ancillary devices to be installed out of sight
- Improved management of ACH - the paths for air movement along the piping and wiring routes can be effectively sealed at the penetration points into the **GEN2™ Box**
- Raised lip on lid provides a template to create exact, consistent drywall opening for trim installation
- Proudly designed and manufactured in Washington, U.S.A.

GEN2™ BOX

SIMPLE - SECURE - SIZED RIGHT

Dimensions

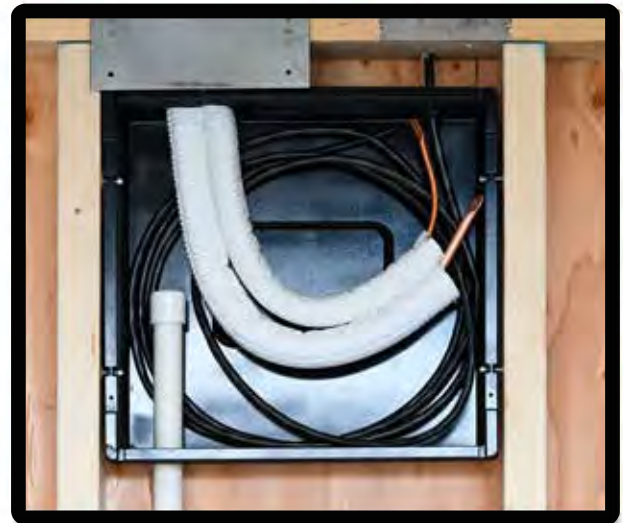
- 13.75" (H) x 14.25" (W) x 3.25" (D)
- Weight: 2.5lbs



Installed in wall

Required for Installation

- 4 screws to attach to studs
- 4 screws to attach cover
- RTV caulk/caulk gun (for ACH sealing)
- Properly sized fine tooth hole saw for cutting
- Saw/multi-tool to remove protective cut-out



Standard mini-split connections



Piping connections and ancillary devices inside the box



Cover on - components safe